

Decorative circuit lines on the left side of the slide, consisting of grey lines with small circles at various points, resembling a printed circuit board layout.

Intelligent **F**actory **S**olution

Decorative circuit lines on the right side of the slide, similar to the ones on the left, consisting of grey lines with small circles.

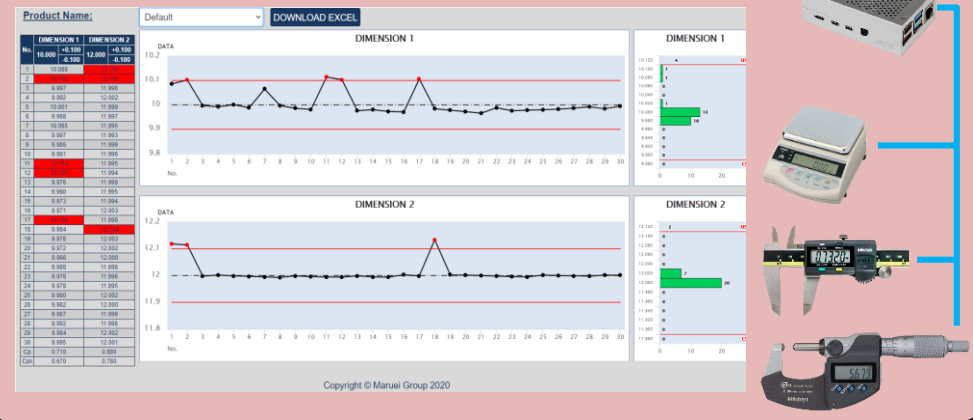
Powered by SAMITECH

Table of content

| | | |
|-----|--|-------|
| ▶▶▶ | Concept & Our Solution | 03 |
| ▶▶▶ | 1. Auto data connection for measure | 04~06 |
| ▶▶▶ | 2. Energy Management IoT | 07~08 |
| ▶▶▶ | 3. Machine OEE Dashboard | 09~11 |
| ▶▶▶ | 4. Maintenance Kakotora | 12 |
| ▶▶▶ | 5. Low cost camera for visual inspection | 13 |
| ▶▶▶ | 6. Paperless statistics input | 14 |
| ▶▶▶ | Our Customers / Partners | 15~16 |
| ▶▶▶ | Our team | 17~18 |
| ▶▶▶ | Contact Us | 19 |

Concept & Our Solution

1. Auto data connection for measure



2. Machine OEE Dashboard

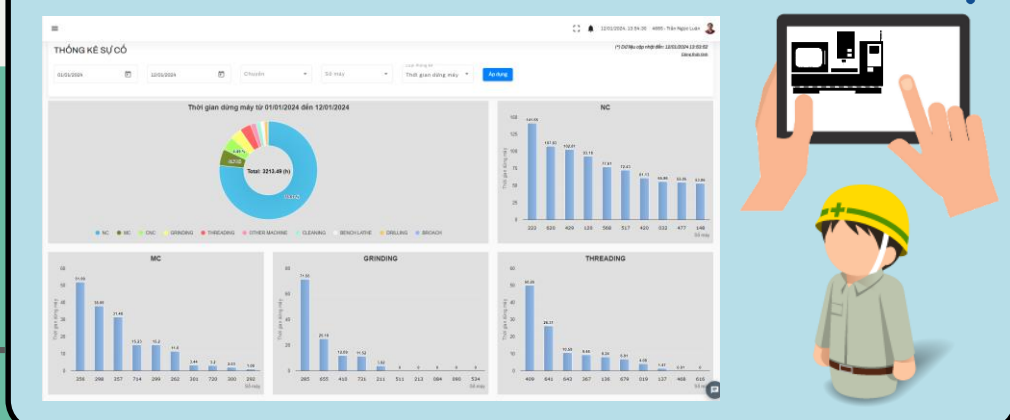


3. Energy Management by IoT

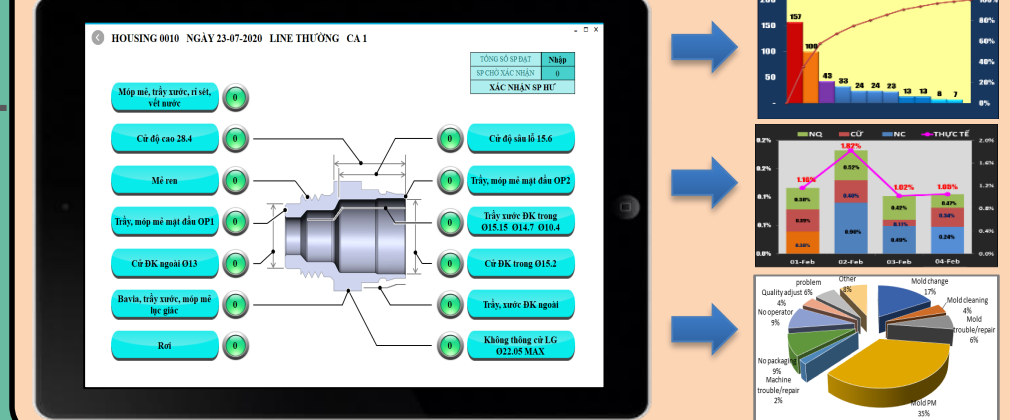


IoT Device can connect any kind of equipments

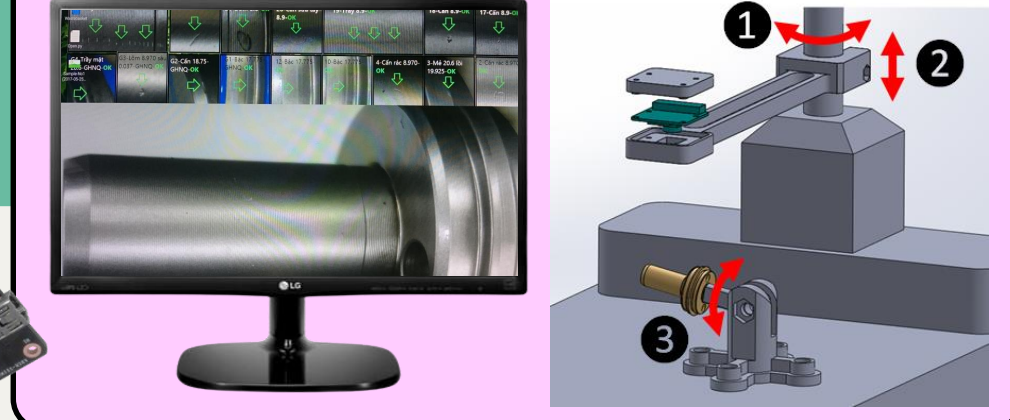
4. Maintenance Kakotora & Prevention



5. Paperless defect statistics

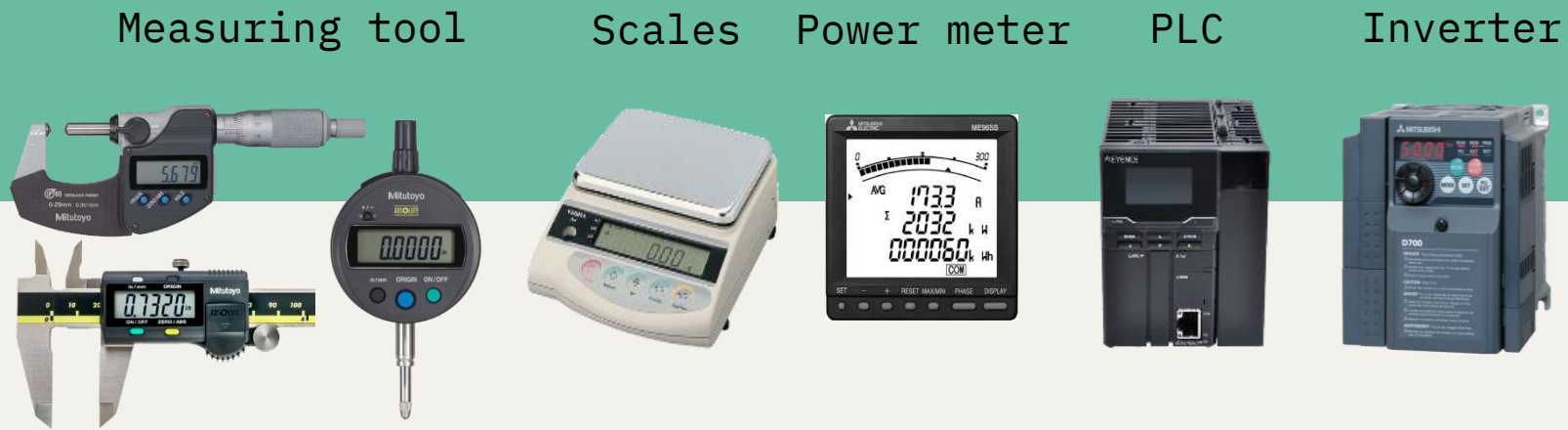


6. Low cost camera for visual inspection



1. Auto data connection for measure

▪ Device connection



▪ Applications



DIGITALIZATION OF MEASUREMENT PROCESS:

- Automatic data collection from measuring instruments.
- Multiple devices can be connected simultaneously.
- Software designed according to user requirements.
- Data storage and processing on the cloud or local factory server.
- Data management with internet-connected devices.
- Paperless for all measurement processes, eliminates handwriting errors, saving up to 80% of manpower.

1. Auto data connection for measure

- Actual Applications

HD Bảng nhập dữ liệu
BẢNG YÊU CẦU KIỂM TRA - ĐO ĐẶC ĐỊNH KỲ

| Mã số linh kiện | BASE 0090 | Tên linh kiện | |
|-------------------------|------------|----------------------|-------|
| Mã số Assy | | Tên Assy | |
| Ngày sản xuất (Lot No.) | 19.10.2021 | Người đo | Thuận |
| Slg yêu cầu kiểm tra | 4 | Ngày yêu cầu H.Thành | |

| No. | Sym | Kích thước tiêu chuẩn | Dụng cụ đo | Kết quả kiểm tra | | | | | | | |
|-----|-----|-----------------------|------------|------------------|-----|--------|-----|--------|----|--------|----|
| | | | | Jdg | Jdg | Jdg | Jdg | | | | |
| 1 | | 2.99 ± 0.09 | Đồng hồ so | 3.0 | OK | 2.987 | OK | 2.971 | OK | 2.985 | OK |
| 2 | | Φ 12.59 ± 0.04 | Panme trụ | 12.571 | OK | 12.598 | OK | 12.551 | OK | 12.587 | OK |
| 3 | | Φ 10.84 ± 0.04 | Panme dẹp | 10.905 | NG | | | | | | |
| 4 | | | | | | | | | | | |
| 5 | | | | | | | | | | | |
| 6 | | | | | | | | | | | |

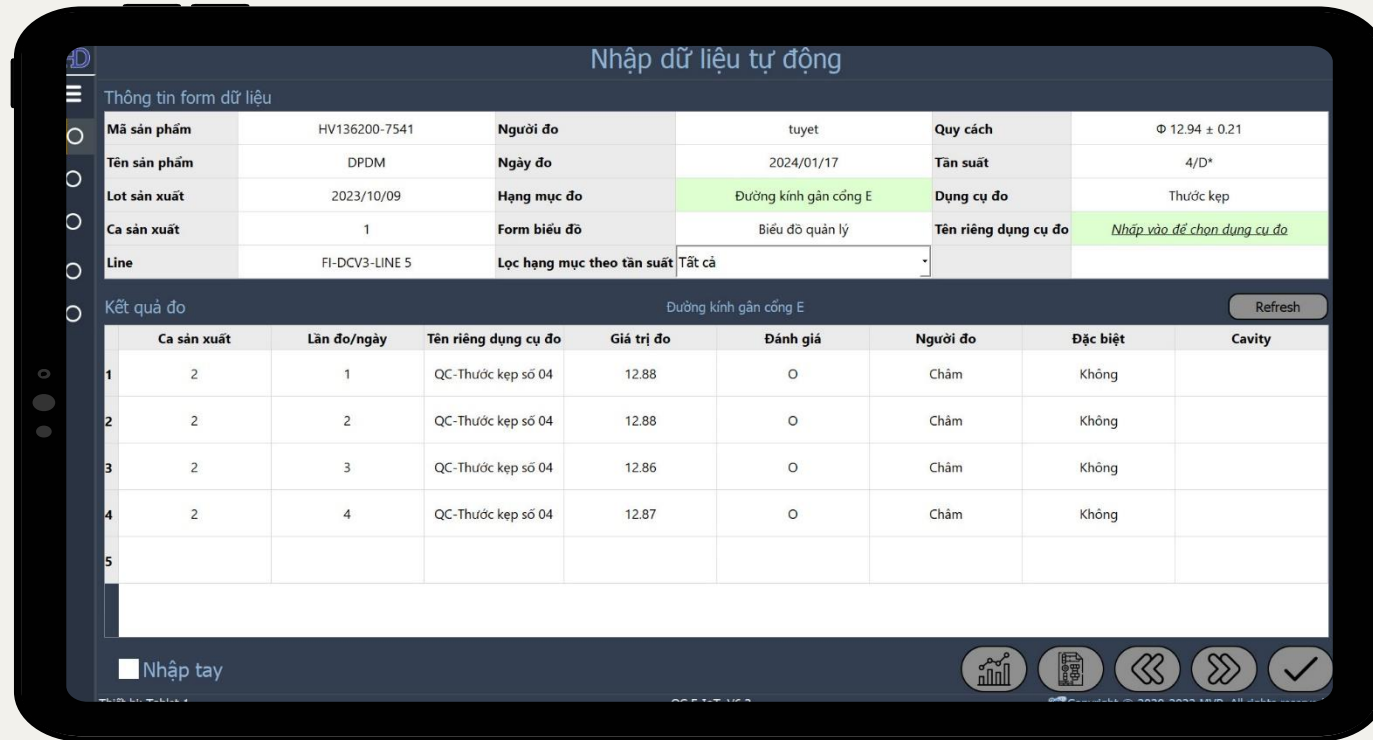
Màn hình phóng to

Open file Export report Exit

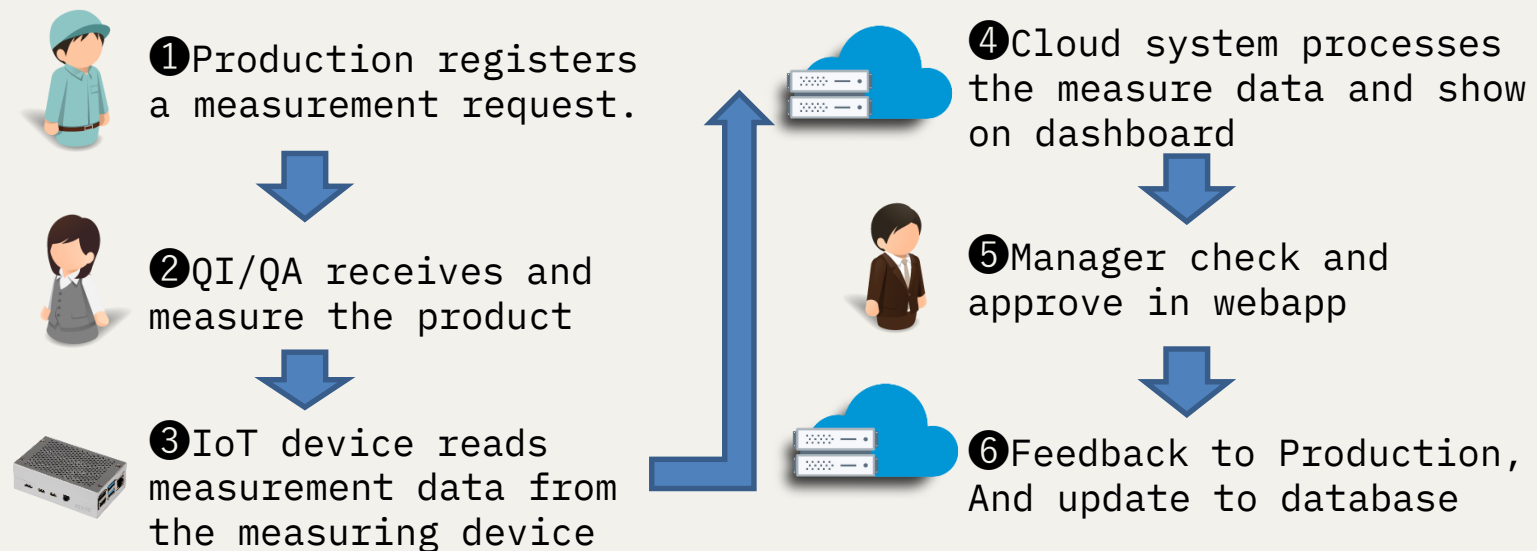
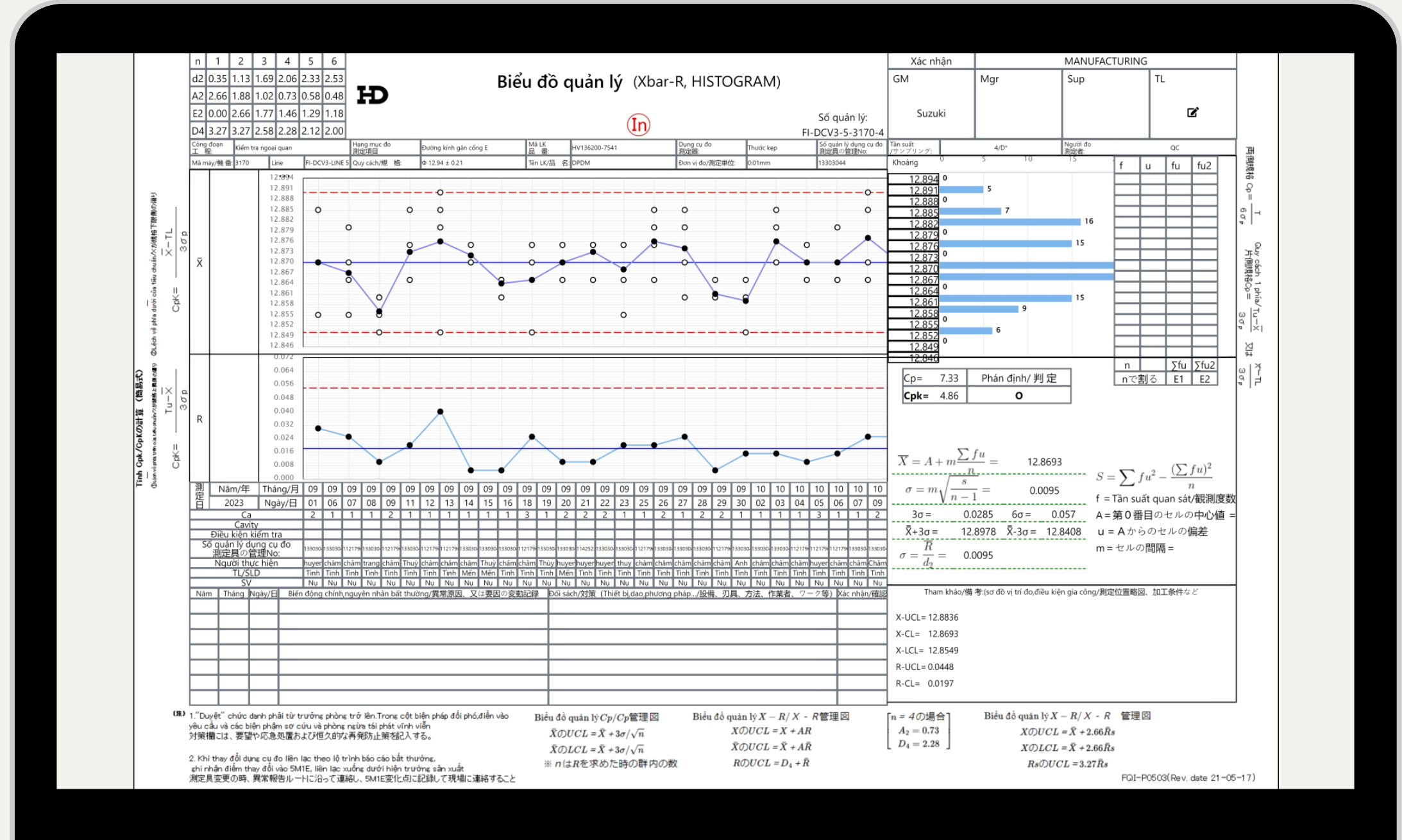
1. Auto data connection for measure

Actual Applications

A. Dashboard for auto input measure data (tablet)

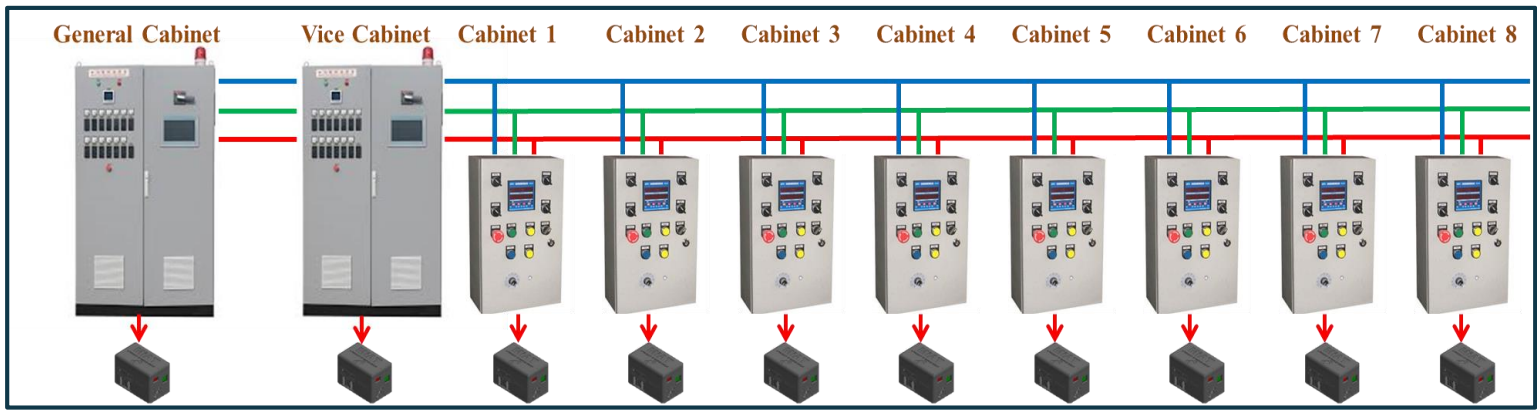
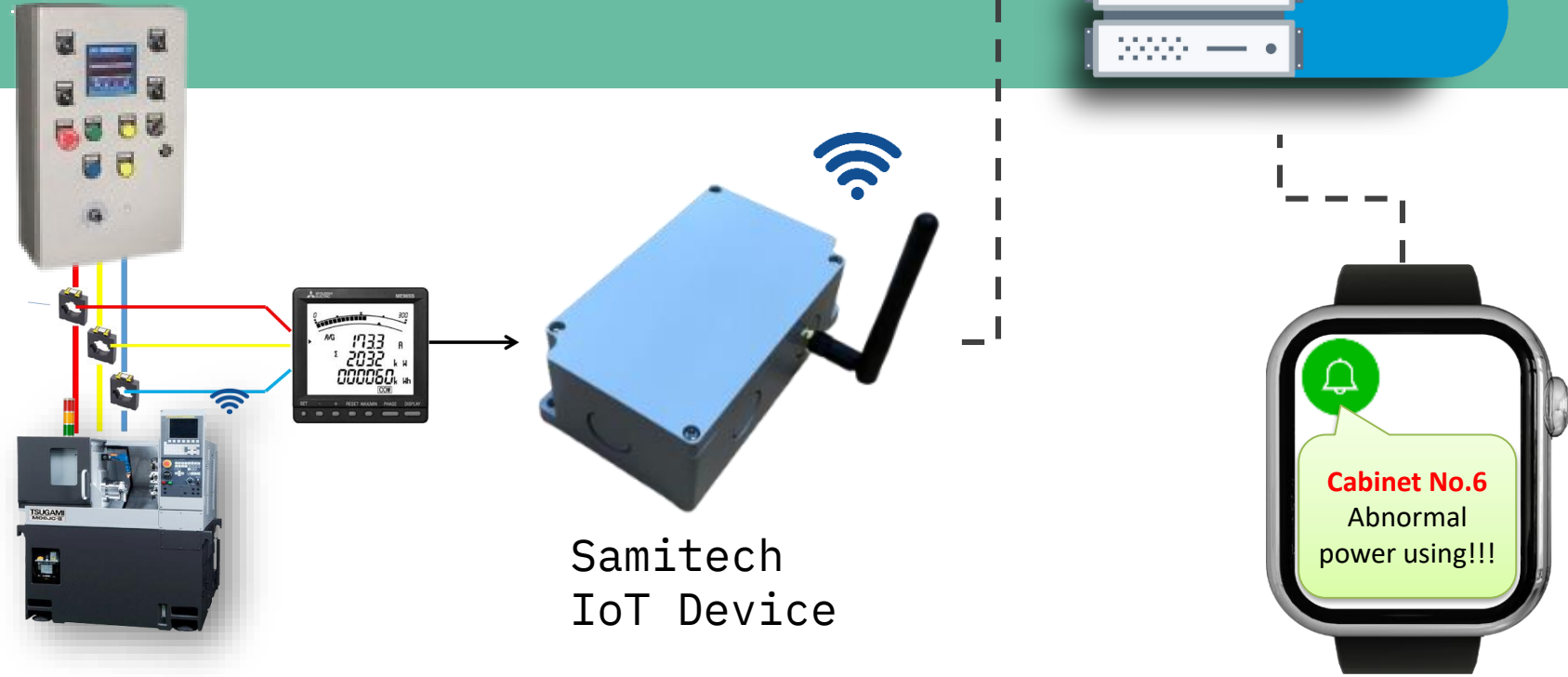


B. Actual control sheet that auto report to Manager to be approved (web)



2. Energy Management IoT

- Device connection
- Applications



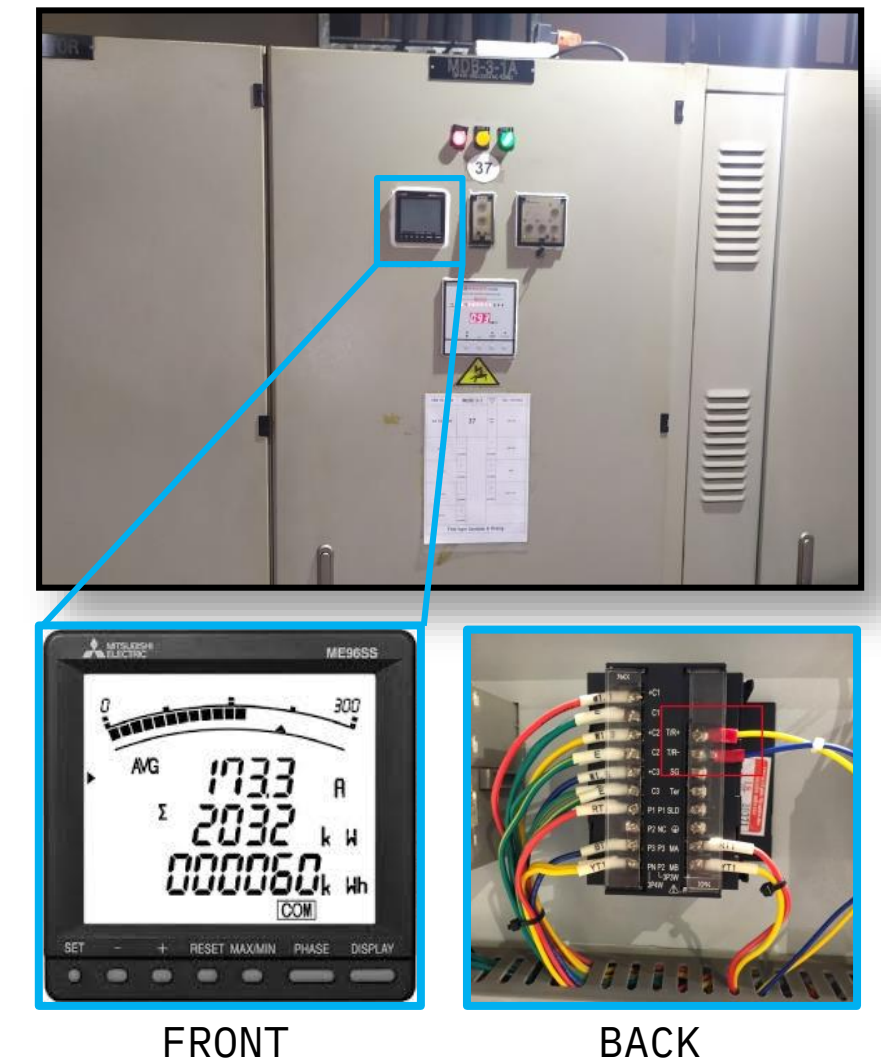
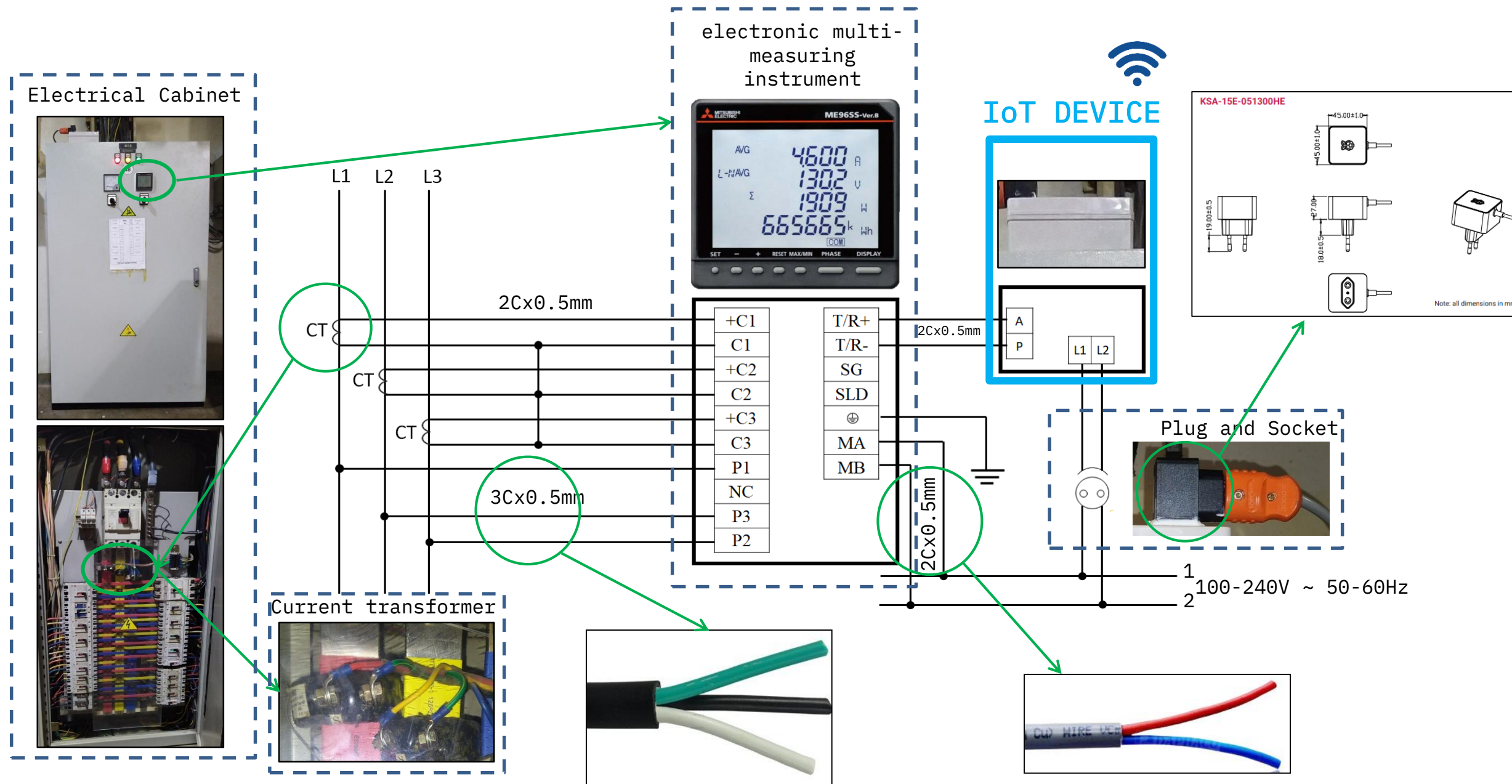
ENERGY MANAGEMENT by IoT:

- Monitoring energy usage, downloading Excel forms for ISO compliance
- Forecasting energy costs
- Improving energy efficiency
- Detecting abnormal power usage



2. Energy Management IoT

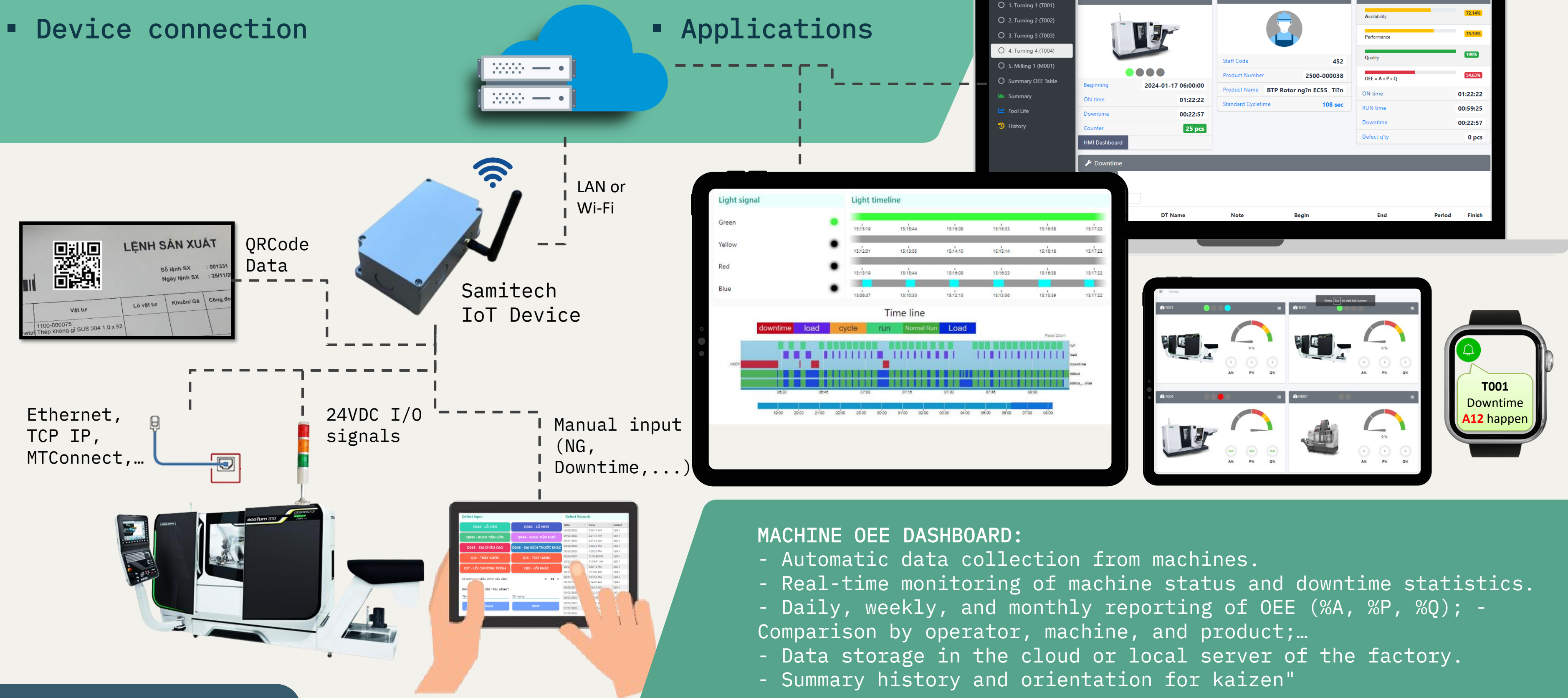
- Actual installation



3. Machine OEE Dashboard

▪ Device connection

▪ Applications

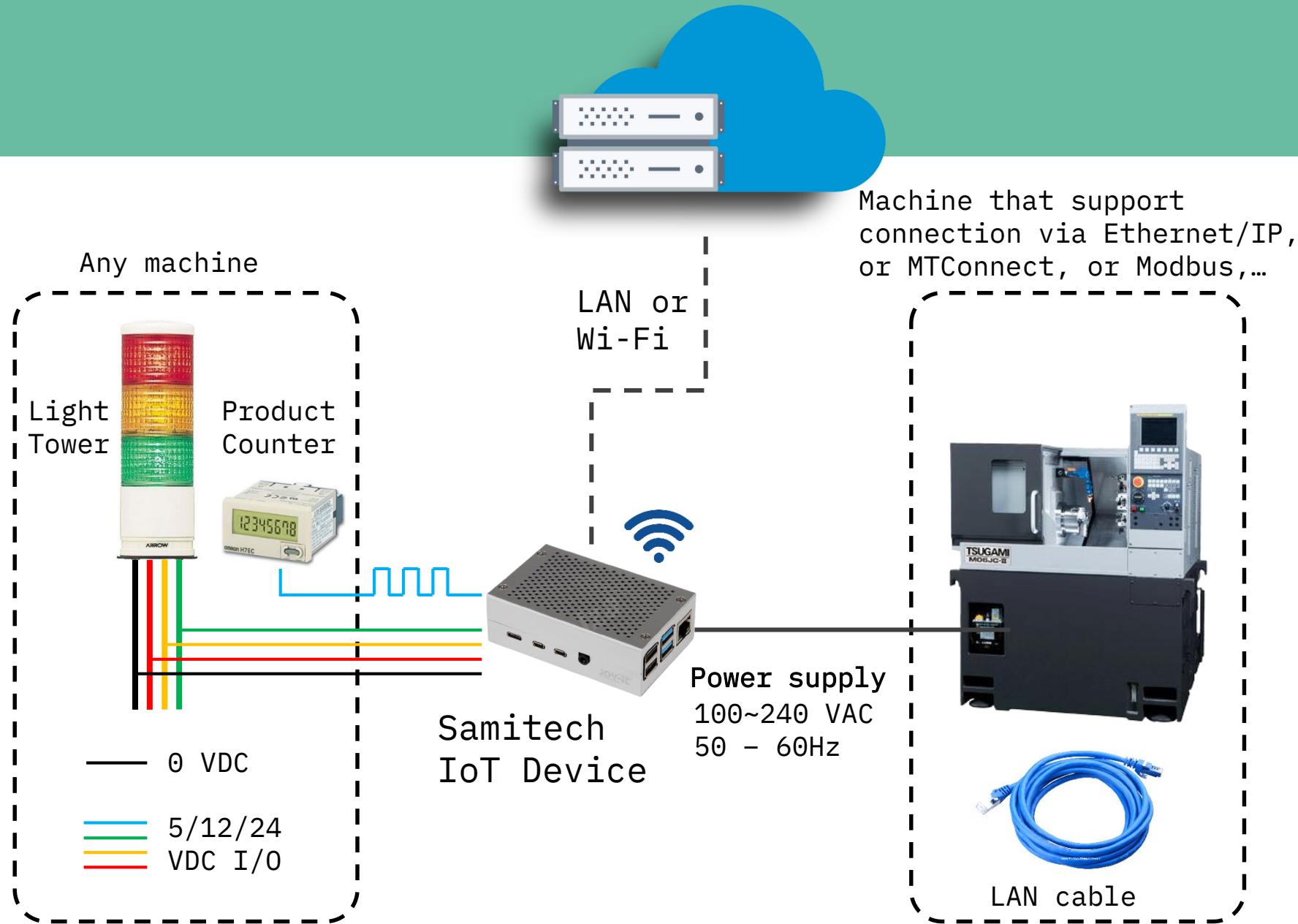


MACHINE OEE DASHBOARD:

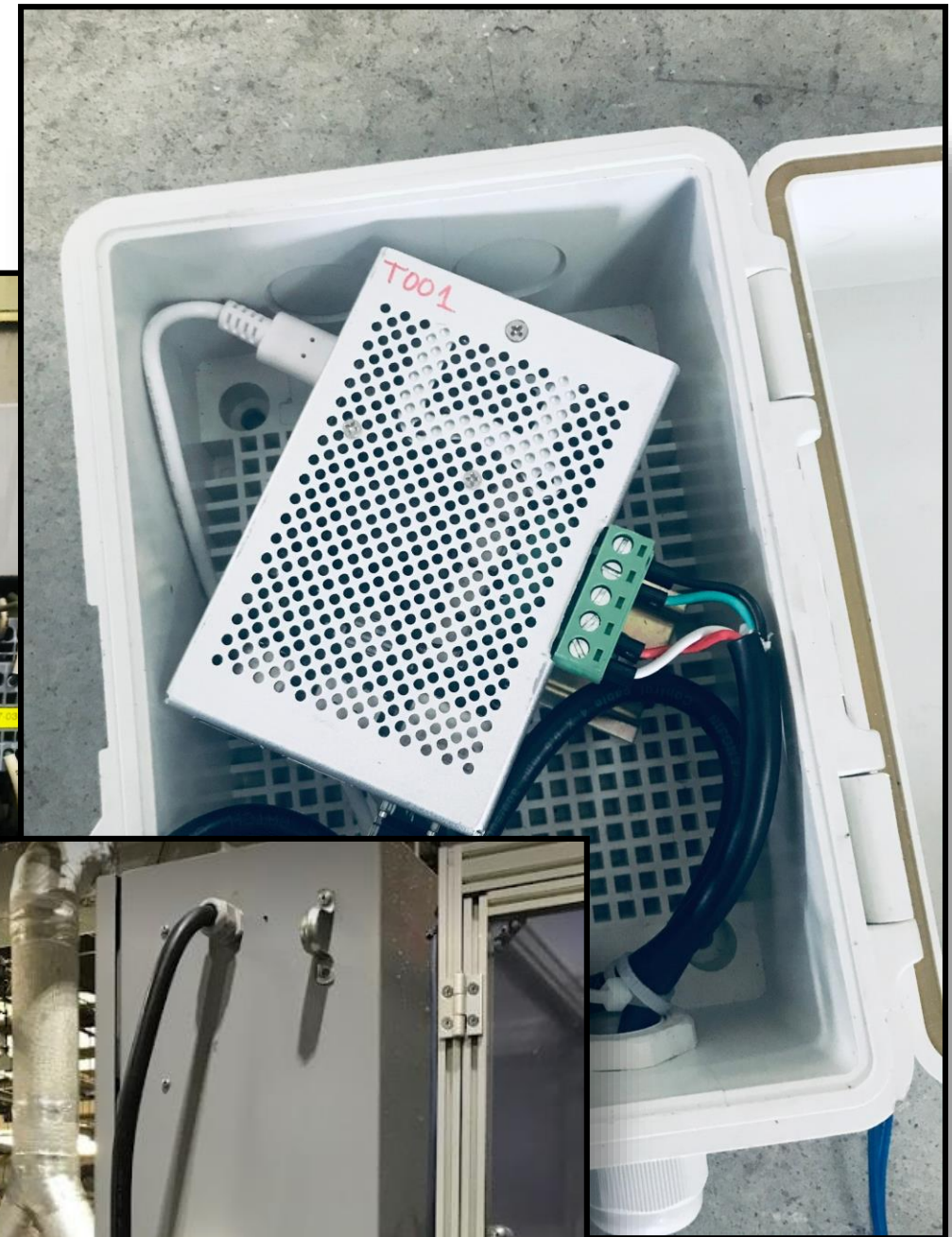
- Automatic data collection from machines.
- Real-time monitoring of machine status and downtime statistics.
- Daily, weekly, and monthly reporting of OEE (%A, %P, %Q);
- Comparison by operator, machine, and product;...
- Data storage in the cloud or local server of the factory.
- Summary history and orientation for kaizen"

3. Machine OEE Dashboard

- Actual installation



Method 1: Inside Cabinet

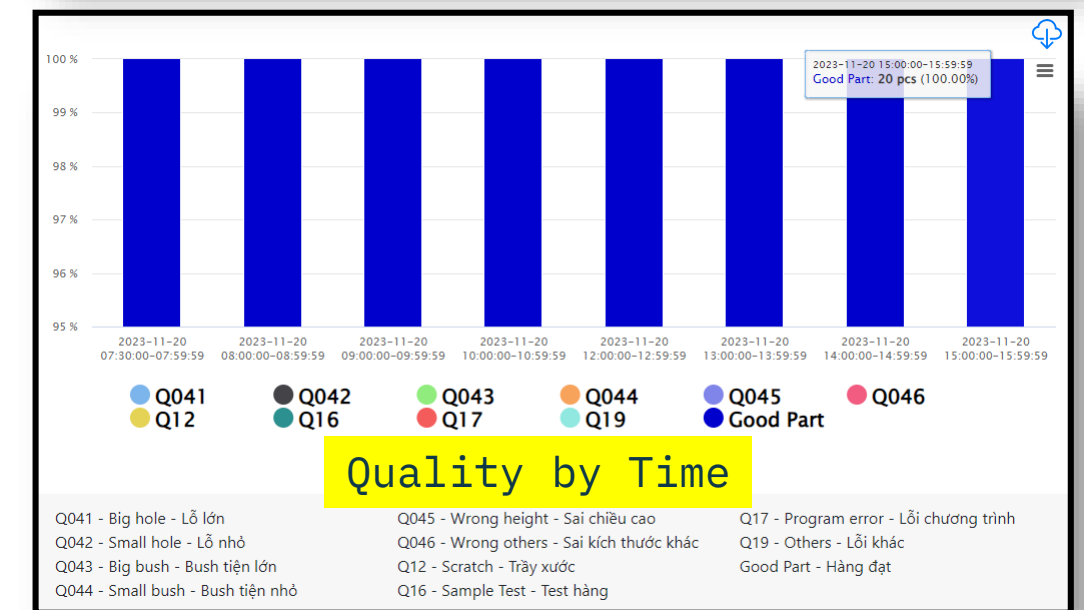
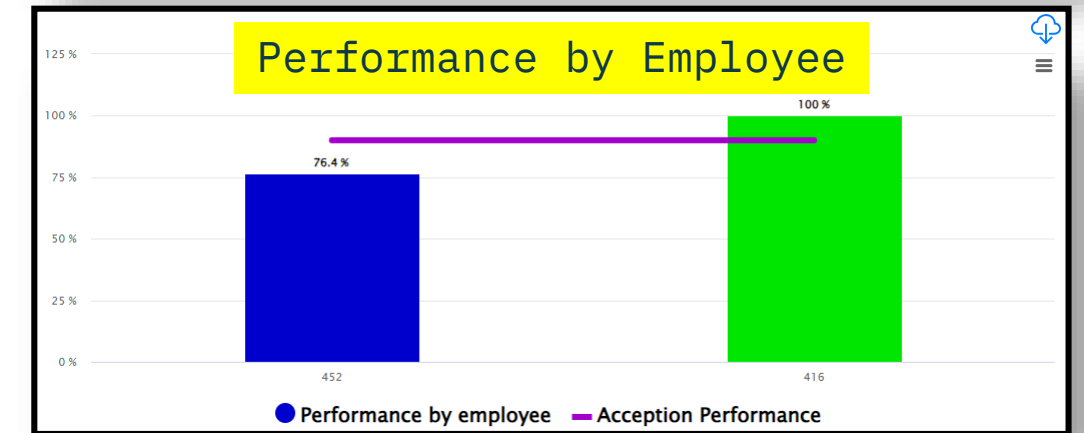
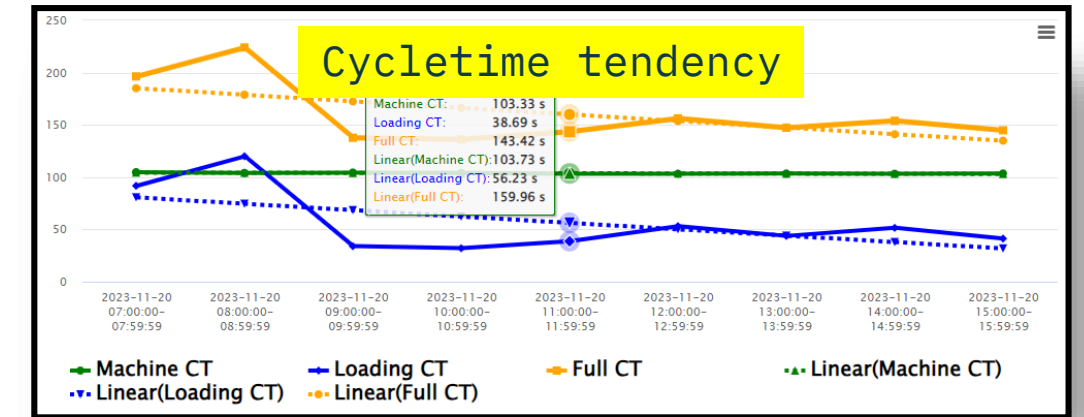
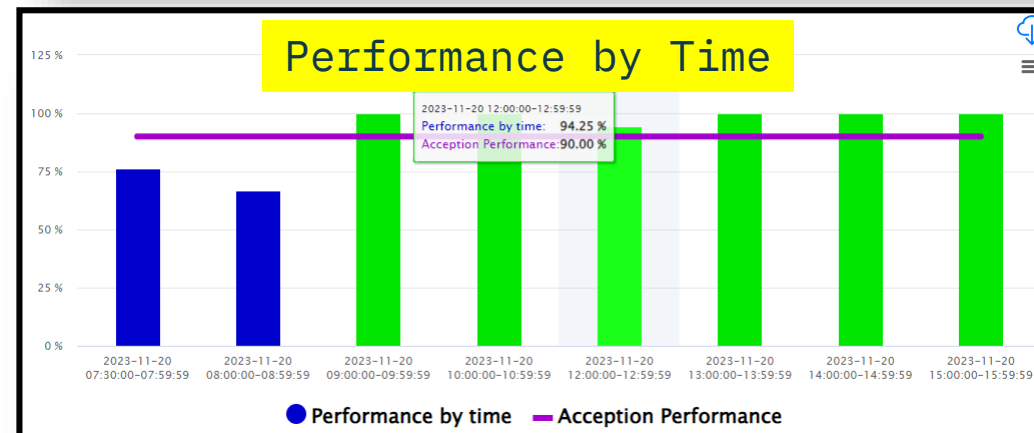
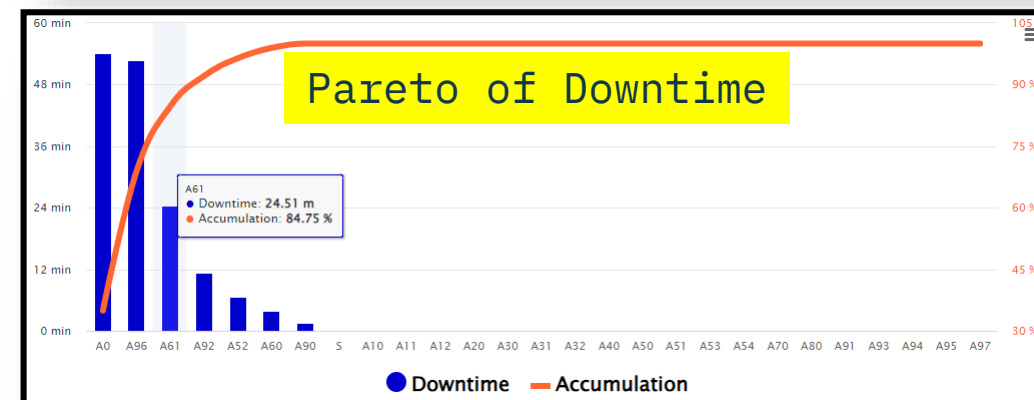
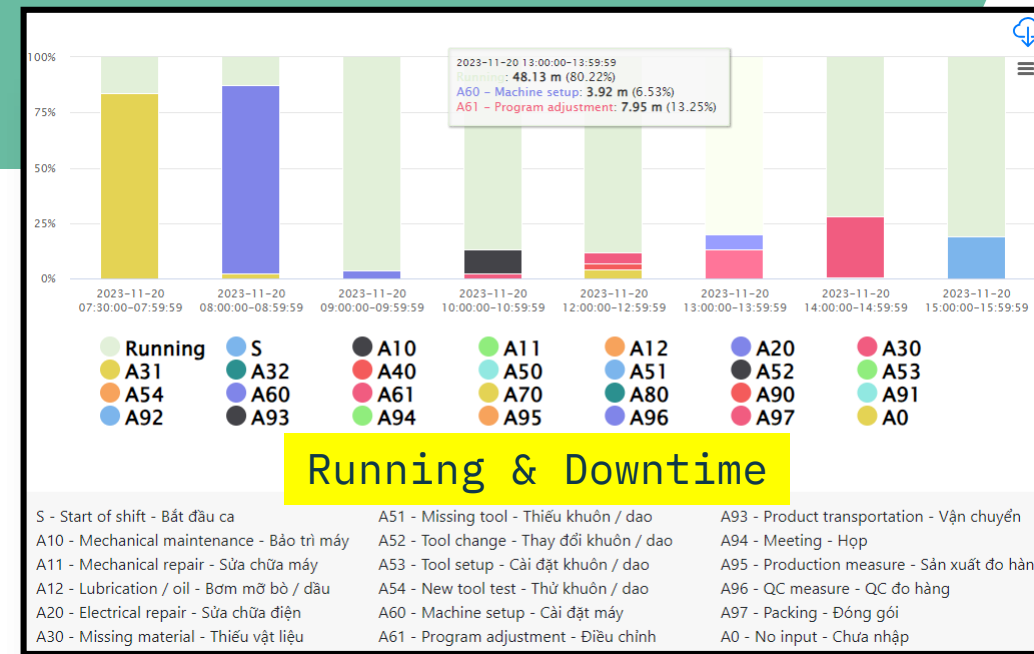
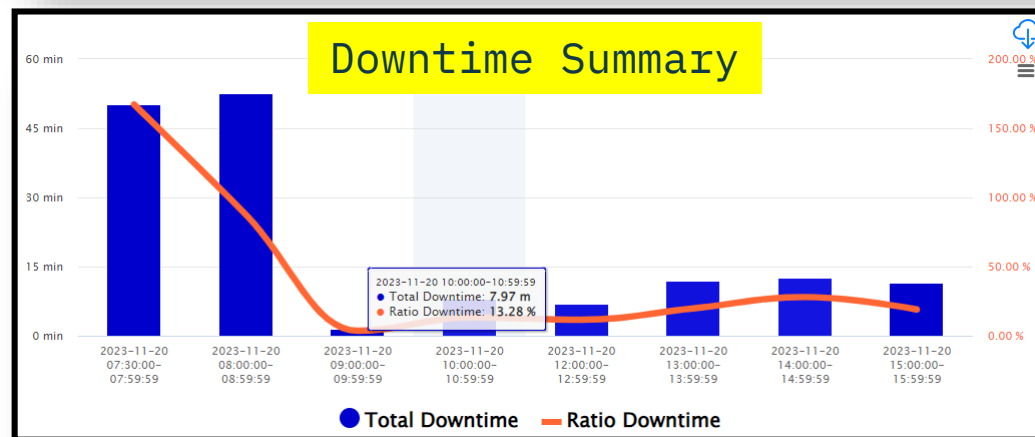
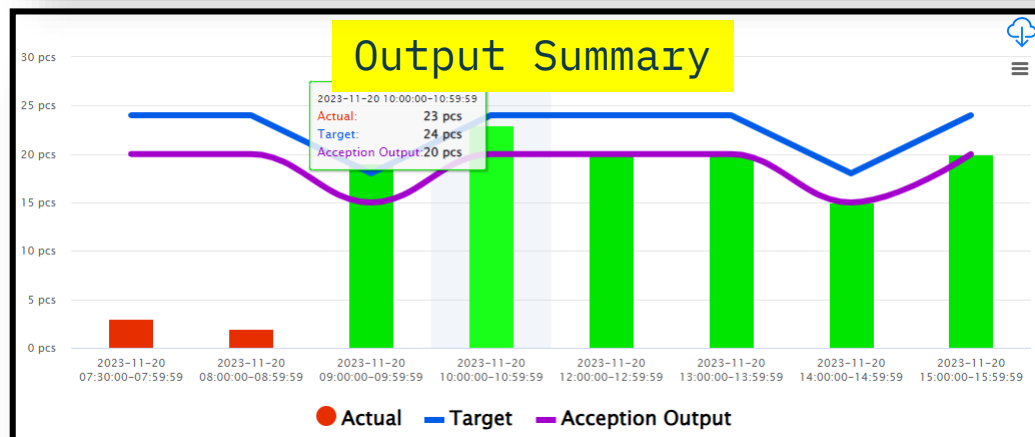
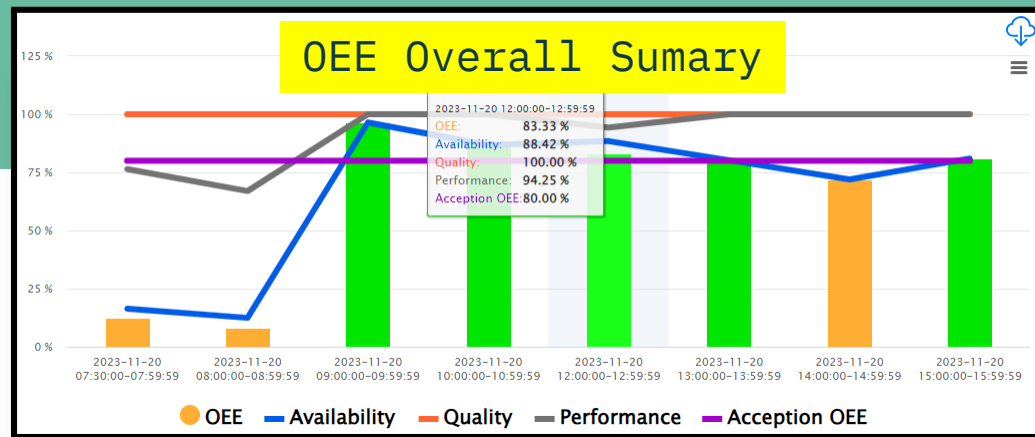


Method 2:
Outside Cabinet
(with oil-
prent cover)



3. Machine OEE Dashboard

Actual examples of Dashboard

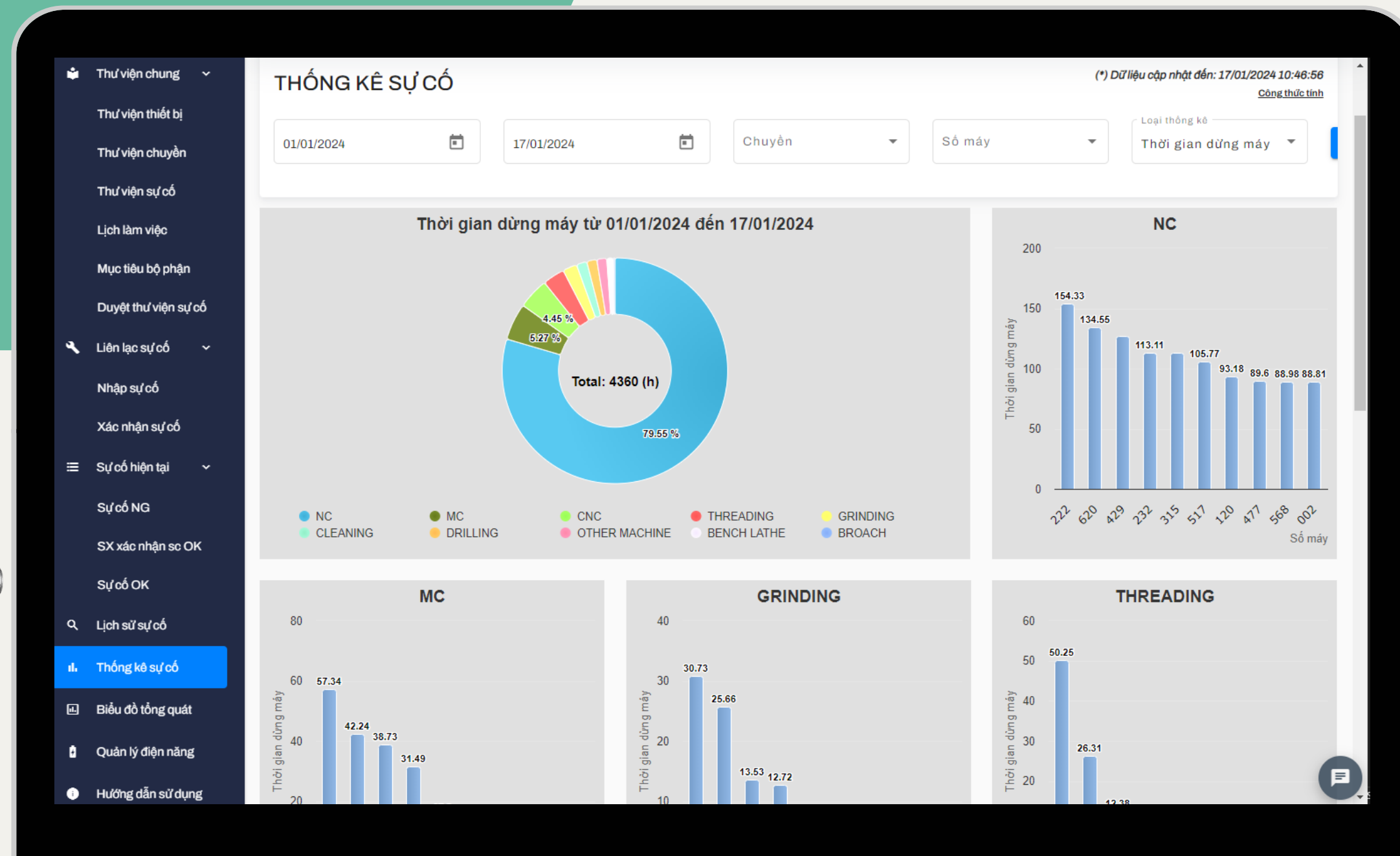


4. Maintenance Kakotora

Applications



- Using kakotora library to repair machine,
- Then update the result details to library after Done!

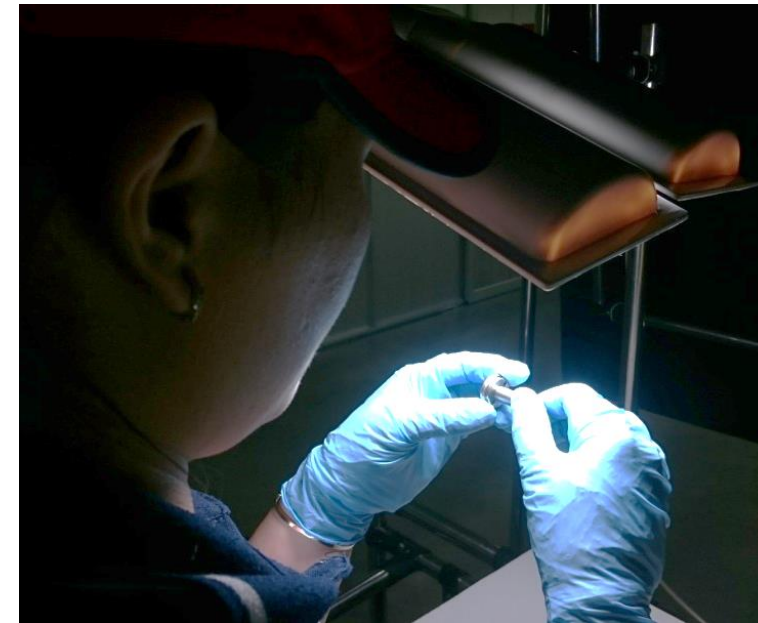


KAKOTORA MANAGEMENT:

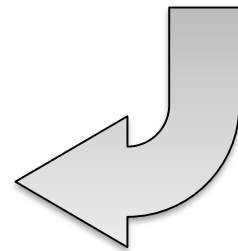
- The Kakotora library contains records of all historical troubles (problem descriptions, root cause analysis, detailed solution steps).
- The Kakotora will be updated whenever a new problems comes.
- So that, new employees can refer to this Kakotora library and can takes their learning.
- Also, in case of a repeat problems, they quickly know what to check and action.
- Statistical reports of all downtime are provided on a daily, weekly, and monthly basis; Comparisons are made by machine, product, and staff.

5. Low cost camera for visual inspection

- Actual installation



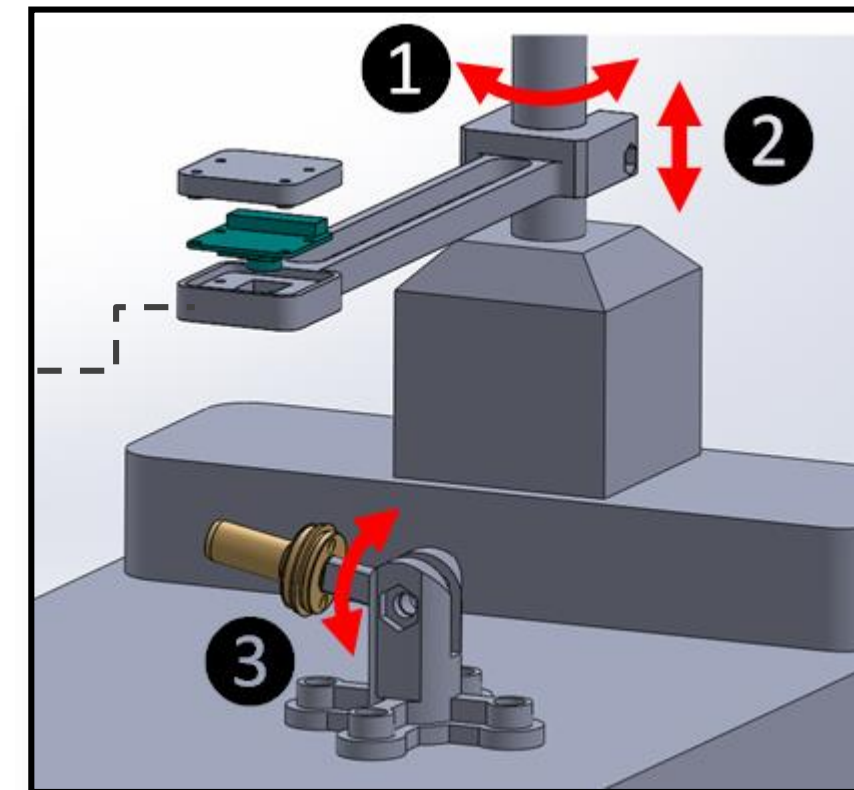
BEFORE



AFTER



Samitech
IoT Device

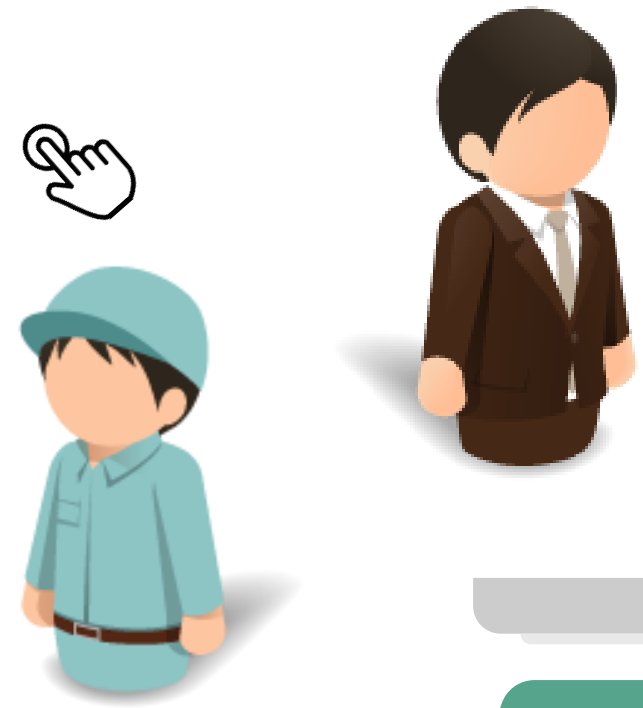
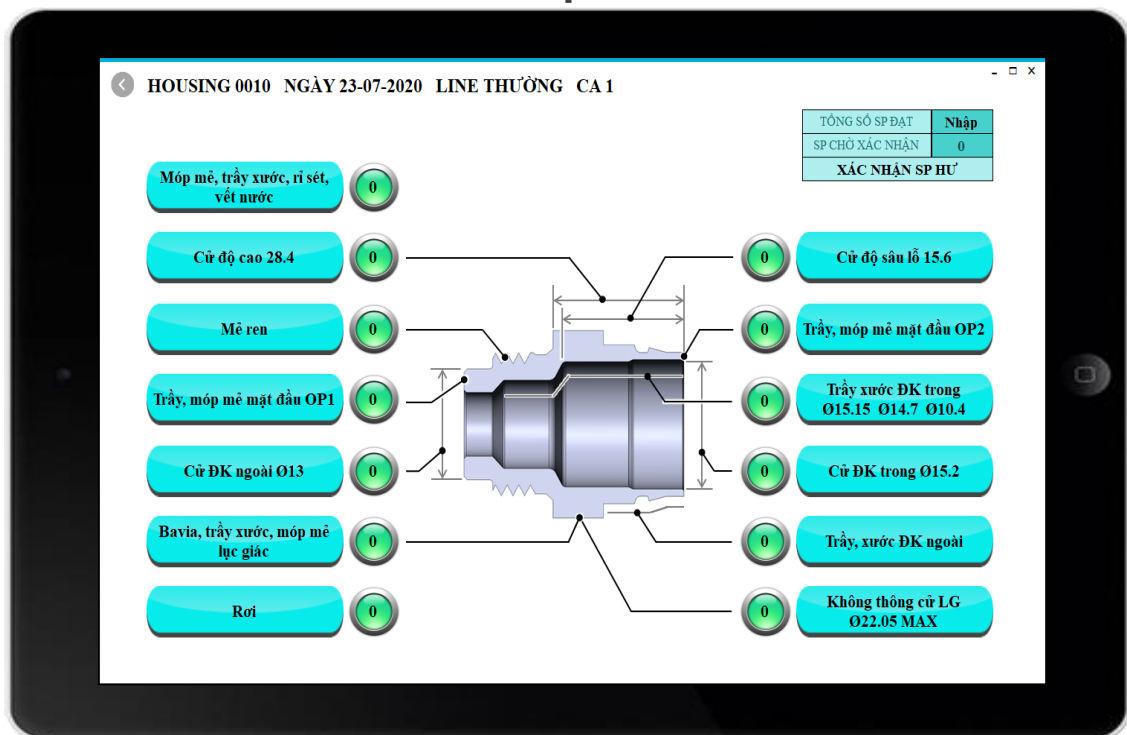


Low cost camera for visual inspection:

- Instead of checking small products directly with the naked eye, we check the product image on a monitor with 15x zoom. This allows workers to easily identify visual defects.
- This method is very simple to set up and requires very low cost.

6. Paperless statistics input

Applications



Ca 1

| 時間別 | 生産数 | 計画数 | 可動率 | 不良数 |
|-------------|-----|------|-------|-----|
| 6:00-7:00 | 500 | 520 | 96% | 0 |
| 7:00-8:00 | 950 | 1040 | 91.3% | 2 |
| 8:00-9:00 | | | | |
| 9:00-10:00 | | | | |
| 10:00-11:00 | | | | |
| 11:00-12:00 | | | | |
| 12:00-13:00 | | | | |
| 13:00-14:00 | | | | |

Ca 2

| 時間別 | 生産数 | 計画数 | 可動率 | 不良数 |
|-------------|-----|------|-------|-----|
| 14:00-15:00 | 500 | 520 | 96% | 0 |
| 15:00-16:00 | 970 | 1040 | 93.2% | 2 |
| 16:00-17:00 | | | | |
| 17:00-18:00 | | | | |
| 18:00-19:00 | | | | |
| 19:00-20:00 | | | | |
| 20:00-21:00 | | | | |
| 21:00-22:00 | | | | |

Hiện thị hiệu suất theo ngày

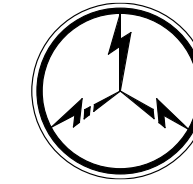
ALL KINDS of PRODUCTION DATA will be store in CLOUD

Paperless statistics:

- Effectiveness: Digitization of data, completely eliminating the need for paper.
- Application: Tracking production output, percentage of defective products, inspection equipment, ...
- All data can be easily accessed, downloaded in Excel format, automatically summarized in reports, with orientation for kaizen and forecasting of critical problems.

Our Customers

 **HAMADEN VIETNAM**
DENSO



KURABE



NIIMI VIỆT NAM

 **TOYOTA TSUSHO**



- Our team has extensive experience in surveying and implementing projects for numerous FDI enterprises, with a particular focus on companies within the automotive supply chain. The list above showcases some of the typical customers for whom we have provided solutions.

Our Partners



- In addition to the systems, software, and applications designed by our team, the hardware devices used to connect and deploy projects are carefully selected by us from reputable manufacturers. The list above showcases some of the typical hardware brands that we have collaborated with and utilized in real projects.

Our team



Ngoc Luan
Business Owner



Cong Tam
Project Manager



Thanh Thuan
IoT Expert



Viet Cuong
IoT Engineer



Van Khanh
IoT Engineer

Our team



Minh Thanh
IT Expert



Duy Khang
Developer



Hoang Son
Developer



Uyen Thi
Developer



Yen Nhan
Marketing Manager





Contact Us

Phone :

0932-797-360

Email :

Samitech.vn@gmail.com

Address :

9G Nam Phuong Residential Area, Quarter 1A,
An Phu Ward, Thuan An City, Binh Duong
Province



Thank You



<https://samitech.vn>